



Butterfly Park

Renovation and Grant Opportunity

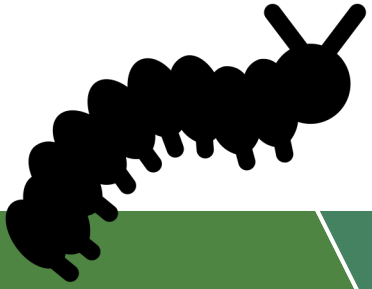
Background

- ▶ Playground was built in 1991
- ▶ Popular use, lots of young children in the area
- ▶ Named in memory of a young girl who loved butterflies
- ▶ Aging and in dire need of an update
- ▶ State grant money available
 - ▶ Matching grant up to \$400K through OSLAD Grant
 - ▶ Maximizes use of tax dollars and renovation plans

O.S.L.A.D. Grant Opportunity

- ▶ The Illinois Department of Natural Resources currently has funding available for the O.S.L.A.D. Grant, which is the Open Space Lands Acquisition and Development Grant
- ▶ Provides up to \$400,000 of matching funds toward a qualifying project
- ▶ 2021 Commissioners' Park renovation was partially funded by an O.S.L.A.D. Grant

Butterfly Park OSLAD Grant Potential Timeline



September
2021

OSLAD
Applications Due

March
2022

IDNR Awards
OSLAD
Grants

Spring
2022

Finalize
Plans & Bid
Docs

Fall
2022

Construction
starts

Summer
2023

Grand Re-
Opening



How soon could this project happen?

- ▶ OSLAD Grant Applications are due September 1, 2021
- ▶ IDNR review of applications typically takes up to 6 months
- ▶ Once grants are awarded, the project must be complete within two years
- ▶ If our application is successful, then the project would start right away (finalize plans, go out to bid, begin construction)
 - ▶ Estimated to start construction in 2022
 - ▶ Mandatory completion in 2024
 - ▶ Construction should only take a few months from start to finish
- ▶ If our application is unsuccessful, then we would need to reconsider the renovation scope and modify for funding available

What types of things could be at the new park?

A potential renovation at Butterfly Park could include:

- ▶ New ADA, inclusive playground*
- ▶ Gazebo (pavilion)*
- ▶ New walking path*
- ▶ ADA accessible benches
- ▶ Butterfly/pollinator garden
- ▶ Rain garden
- ▶ Butterfly benches and other Butterfly-themed amenities
- ▶ Open space for general use

*Amenities that help us score points on our grant application

What is an Inclusive Playground?

A well-designed, inclusive play environment enables all children to develop physically, socially and emotionally.

An inclusive playground provides the just-right level of challenge, addresses all levels of ability, and goes beyond minimum accessibility to create play experiences that meet a variety of needs and interests.

At an inclusive playground, children of all abilities can interact with each other and do what all kids want to do: play.

source: <https://www.playlsi.com/en/playground-design-ideas/inclusive-play/inclusive-play-commitment/>

What is at an Inclusive Playground?

- ▶ Same traditional playground structures you're used to
- ▶ Wheelchair accessible ramps and routes
- ▶ Activity panels
- ▶ Sensory simulation
- ▶ Musical components
- ▶ Fosters social interaction

Why an Inclusive Playground?

- ▶ Eliminates bias toward children with disabilities
- ▶ Simple and intuitive use
- ▶ Suitable for children of all ages and abilities
- ▶ Artificial surfacing
 - ▶ True ADA compliance
 - ▶ Lower maintenance needs
 - ▶ Wheelchair accessible at all times
- ▶ **Would be the first of its kind in Streamwood!**

Nearby Inclusive Playgrounds



SEBA Park
151 Water St.
South Elgin, Illinois 60177



Nearby Inclusive Playgrounds

Friends Park

719-745 Vernon Ave

Glencoe, Illinois 60022

Also some in Arlington Heights,
Schaumburg, Buffalo Grove, Mount
Prospect, Des Plaines, Chicago, Lake
Forest, plus many more local
Chicagoland communities!



Examples of Inclusive Playgrounds



Conceptual Playground Design

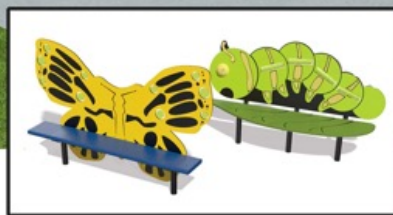
Butterfly Park



2-5 Area



Rollerslide



Possible Butterfly Bench or Rooftop



landscape
structures
PLAYLSI.COM

nojoys
Leisure Products
(800) 526-6197

Conceptual Playground Design



Conceptual Playground Design



Conceptual Playground Design



Conceptual Playground Design



Butterfly Theme Inspiration



Butterfly Garden



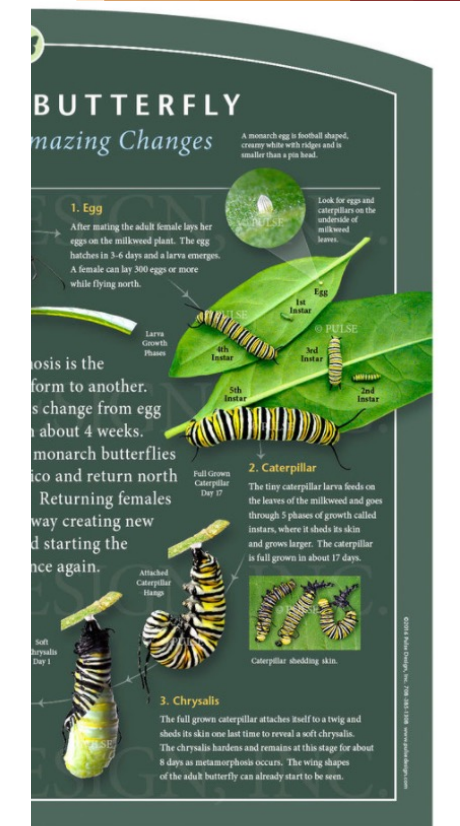
Interpretive Signage



"PULSE DESIGN NATURE SERIES" Interpretive Trail Sign #034-2020-02D-19519, Size 20"x30", ©2019 Pulse Design, Inc.



"PULSE DESIGN NATURE SERIES" Interpretive Trail Sign #040-2836-08A-14119, Size 28"x36", ©2019 Pulse Design, Inc. To Order: Call 708-385-1308 or Visit: www.pulsedesign.com



"PULSE DESIGN NATURE SERIES" Interpretive Trail Sign #040-2836-08A-14119, Size 28"x36", ©2019 Pulse Design, Inc. To Order: Call 708-385-1308 or Visit: www.pulsedesign.com

Questions? Comments? Feedback?

- ▶ We'd love to hear from you!
- ▶ Please share your thoughts at the meeting, or you can send an email to Jeff Janda at jjanda@spdcares.com